

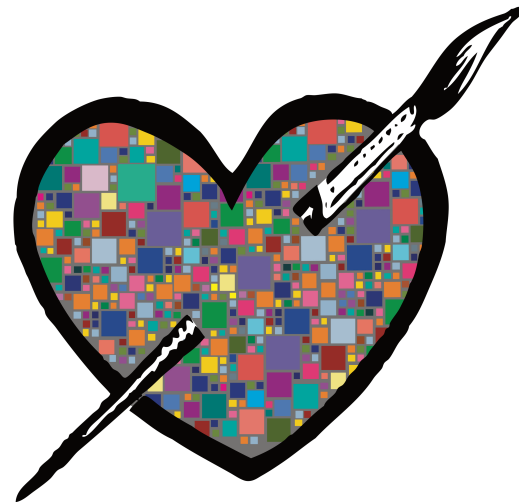
A piece of our heart: ORDER FORM

Name: _____

Address:*

Phone #: _____

Email: _____



preferred way to contact you if we have questions?

email phone

*so that we can send you an acknowledgement letter
for your tax deductible donation

Choose size/donation amount:

- 2x2" for \$100 approx. 5 characters
 3x3" for \$250 approx. 16 characters
 4x4" for \$500 approx. 36 characters
 5x5" for \$750 approx. 64 characters
 6x6" for \$1,000 approx. 100 characters

What would you like it to say? See guide on the back of this sheet. Spaces count as characters.

Preferred color(s)? (optional) _____

Enclosed is a **check** made payable to **Art with a Heart** in the amount of \$ _____

I would like to use a **credit card**.

Type of card: Visa MasterCard American Express Discover

Credit Card #: _____ Exp: _____/_____/_____ CSC: _____

Signature: _____

Alternatively, make a **secure online** donation by visiting artwithaheart.net/support.

Please email the completed form to crutheiser@artwithaheart.net or mail it to
Art with a Heart, 3000 Falls Road, Mill No. 1, Baltimore, MD 21211.

6" x 6": approx. 100 characters

EXAMPLE: *The best love is the kind that awakens the soul, makes us reach for more, & brings peace to our minds*

5" x 5": approx. 64 characters

EXAMPLE: *"Every artist was first an amateur"*
—Ralph Waldo Emerson
Megan ♥ Tony

4" x 4": approx. 36 characters

EXAMPLE: *"Creativity takes courage"*
—Henri Matisse

3" x 3": approx. 16 characters

EXAMPLES: *Jenny & Jeremy D.*
OR *The Ralls Family*

2" x 2": approx. 5 characters

EXAMPLES: *I ♥ Y.D.J.* OR *R.P. + A.P.*

